

# A Coffee for Bach (Concerto for strings)

I.

Moderato ♩ = 100

Joachim Johow  
www.violump.de

Violine 1

Violine 2

Viola

Violoncello

Kontrabass

*pizz*

6

VI. 1

VI. 2

Vla.

Vc.

Kb.

11 **A** *arco*

VI. 1

VI. 2

Vla.

Vc.

Kb.

14

VI. 1

VI. 2

Vla.

Vc.

Kb.

*f*

**B**

18

VI. 1  
VI. 2  
Vla.  
Vc.  
Kb.

*pizz*

Detailed description: This system contains measures 18 through 23. It features five staves: Violin 1 (VI. 1), Violin 2 (VI. 2), Viola (Vla.), Violoncello (Vc.), and Kontrabaß (Kb.). The key signature has one sharp (F#). The time signature is 4/4. Measure 18 starts with a treble clef and a key signature change to one sharp. The Viola part has a dynamic marking of *pizz* (pizzicato) starting in measure 24. The Violoncello and Kontrabaß parts have a dynamic marking of *f* (forte) starting in measure 30.

24

VI. 1  
VI. 2  
Vla.  
Vc.  
Kb.

Detailed description: This system contains measures 24 through 29. The Violin 1 part has a dynamic marking of *f* starting in measure 30. The Viola part has a dynamic marking of *f* starting in measure 30. The Violoncello and Kontrabaß parts have a dynamic marking of *mf* (mezzo-forte) starting in measure 35.

30

VI. 1  
VI. 2  
Vla.  
Vc.  
Kb.

*f*  
*arco*

Detailed description: This system contains measures 30 through 34. The Violin 1 part has a dynamic marking of *f* starting in measure 30. The Viola part has a dynamic marking of *f* starting in measure 30. The Violoncello and Kontrabaß parts have a dynamic marking of *mf* starting in measure 35. The word *arco* is written below the Violoncello staff in measure 30.

**C**

35

VI. 1  
VI. 2  
Vla.  
Vc.  
Kb.

*f*  
*f*  
*f*  
*mf*

Detailed description: This system contains measures 35 through 39. The Violin 1 part has a dynamic marking of *f* starting in measure 35. The Violin 2 part has a dynamic marking of *f* starting in measure 35. The Viola part has a dynamic marking of *f* starting in measure 35. The Violoncello and Kontrabaß parts have a dynamic marking of *mf* starting in measure 35.

38

VI. 1  
VI. 2  
Vla.  
Vc.  
Kb.

D

Detailed description: This system contains measures 38 through 41. It features five staves: Violin 1 (VI. 1), Violin 2 (VI. 2), Viola (Vla.), Violoncello (Vc.), and Kontrabaß (Kb.). The music is in a key with one sharp (F#) and a 3/4 time signature. Measure 38 starts with a treble clef and a key signature of one sharp. A dynamic marking 'D' is placed below the Viola staff in measure 40. The Viola part has a 12/8 time signature.

42

VI. 1  
VI. 2  
Vla.  
Vc.  
Kb.

pizz

Detailed description: This system contains measures 42 through 46. It features the same five staves as the previous system. Measure 42 starts with a treble clef and a key signature of one sharp. A dynamic marking 'pizz' is placed below the Kontrabaß staff in measure 44. The Viola part has a 12/8 time signature.

47

VI. 1  
VI. 2  
Vla.  
Vc.  
Kb.

arco

Detailed description: This system contains measures 47 through 50. It features the same five staves. Measure 47 starts with a treble clef and a key signature of one sharp. A dynamic marking 'arco' is placed below the Kontrabaß staff in measure 50. The Viola part has a 12/8 time signature.

51

VI. 1  
VI. 2  
Vla.  
Vc.  
Kb.

Detailed description: This system contains measures 51 through 54. It features the same five staves. Measure 51 starts with a treble clef and a key signature of one sharp. The Viola part has a 12/8 time signature. The system concludes with a double bar line in measure 54.

Moderato ♩ = 100

I.

The image shows a musical score for Violin 1, titled "A Coffee for Bach (Concerto for strings)". The score is in G major (one sharp) and 3/4 time. It begins with a tempo marking of "Moderato" and a metronome marking of "♩ = 100". The score is divided into measures, with measure numbers 6, 10, 13, 16, 19, 29, 35, 38, 40, 43, 47, and 51 indicated. The score features several dynamic markings, including "f" (forte) at measures 10 and 35. There are four marked sections: Section A (measures 10-13), Section B (measures 19-29), Section C (measures 35-40), and Section D (measures 43-51). Section B includes a fermata over measure 19. The score concludes with a final whole note chord in measure 51.

Violine 2

# A Coffee for Bach (Concerto for strings)

Moderato ♩ = 100

I.

Joachim Johow  
www.violump.de

6

10 **A**  
*f*

14

18 **B** 3

25

31

35 **C**  
*f*

39

43 **D**

47

51

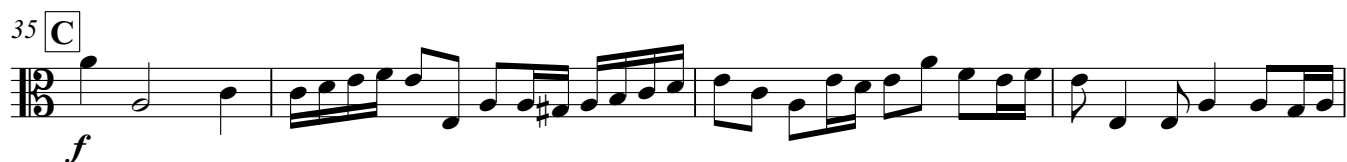
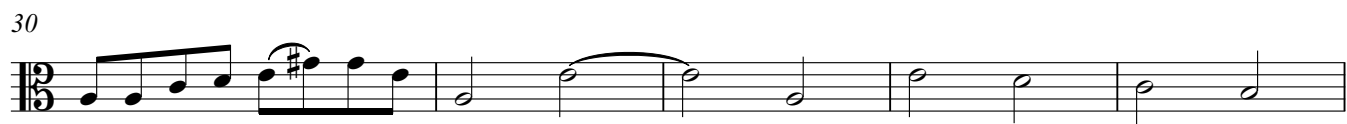
Viola

# A Coffee for Bach (Concerto for strings)

Moderato ♩ = 100

I.

Joachim Johow  
www.violump.de



Violoncello

# A Coffee for Bach (Concerto for strings)

Moderato ♩ = 100

I.

Joachim Johow  
www.violump.de

1

6

11 **A**

15

19 **B**

24

30 *f*

35 **C**  
*mf*

39

43 **D**

48

51

Kontrabass **A Coffee for Bach (Concerto for strings)**

Moderato ♩ = 100

I.

Joachim Johow  
www.violump.de

8 *pizz*

8 **A** *arco*

13

18 **B** *pizz*

25 *arco*

31

35 **C**

39

43 **D** *pizz*

49 *arco*